

Arctic Corridors and Northern Voices: Sharing Inuit Knowledge

Indigenous Data Management

uOttawa – March 28, 2019

Natalie Carter ncarte3@uottawa.ca

Jackie Dawson



Arctic Corridors – Northern Voices Project



Three Major Objectives:

- Establish 25+ year Arctic shipping spatial trends database
- Community-Identified Concerns About Increased Shipping
- Community-Identified Recommendations for Corridors



Community Workshops

- 13 communities (3 regions)
- Local partners, 45 community researchers
- Key knowledge holders : 127 hunters, Elders, community representatives

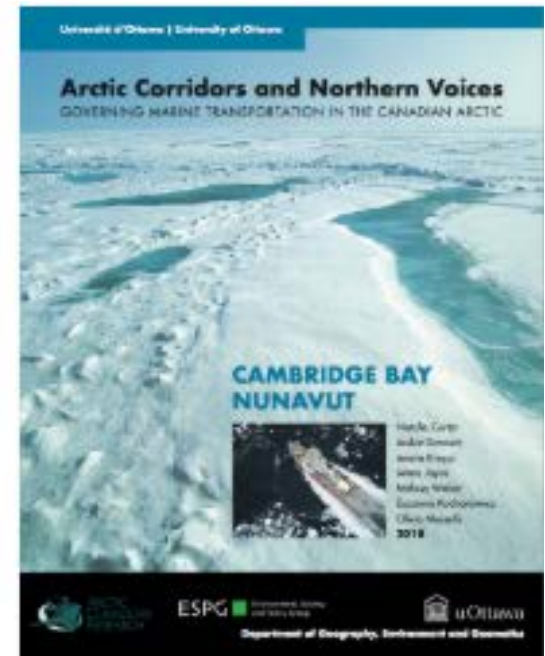
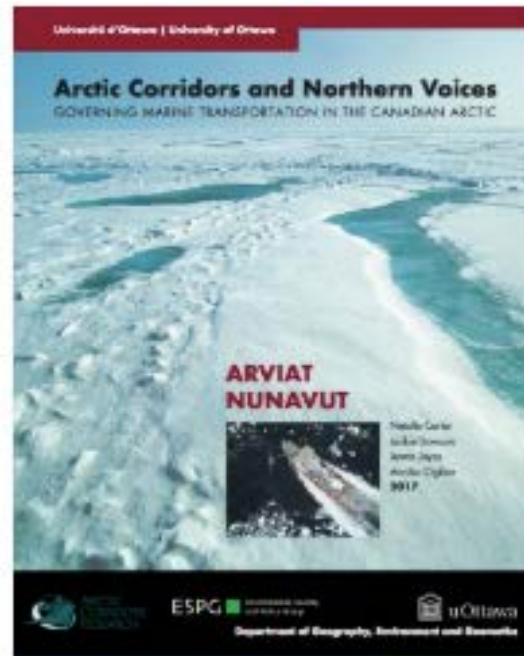
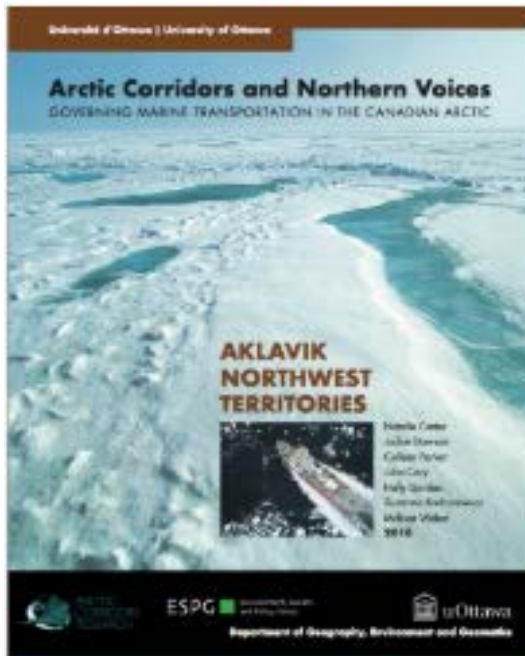


Community Workshops

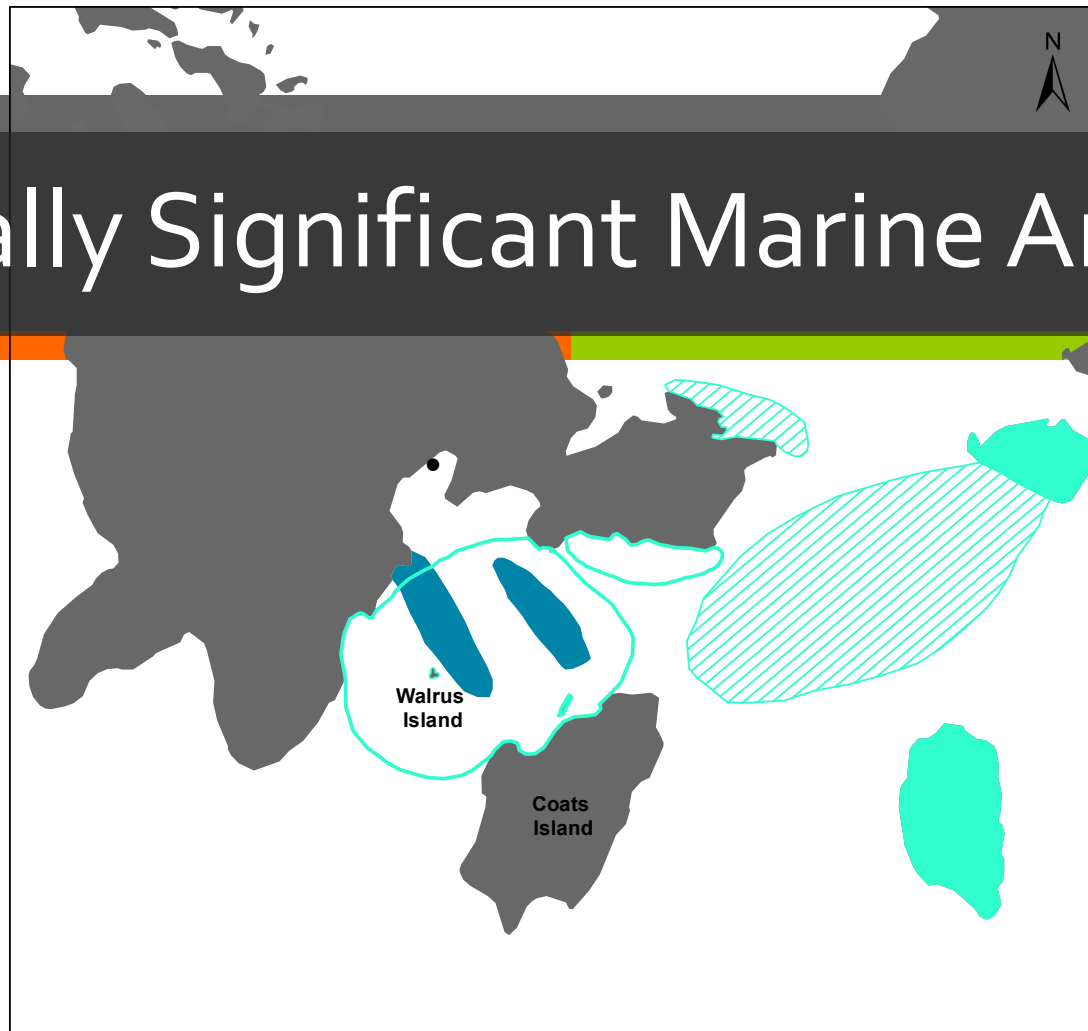
- 2 days of mapping & discussions
- Seasonal benefits, concerns, impacts of ships
- Seasonal corridors recommendations
- Who to share with and how



Data – Community Reports



Culturally Significant Marine Areas



0 20 40 80
Kilometers

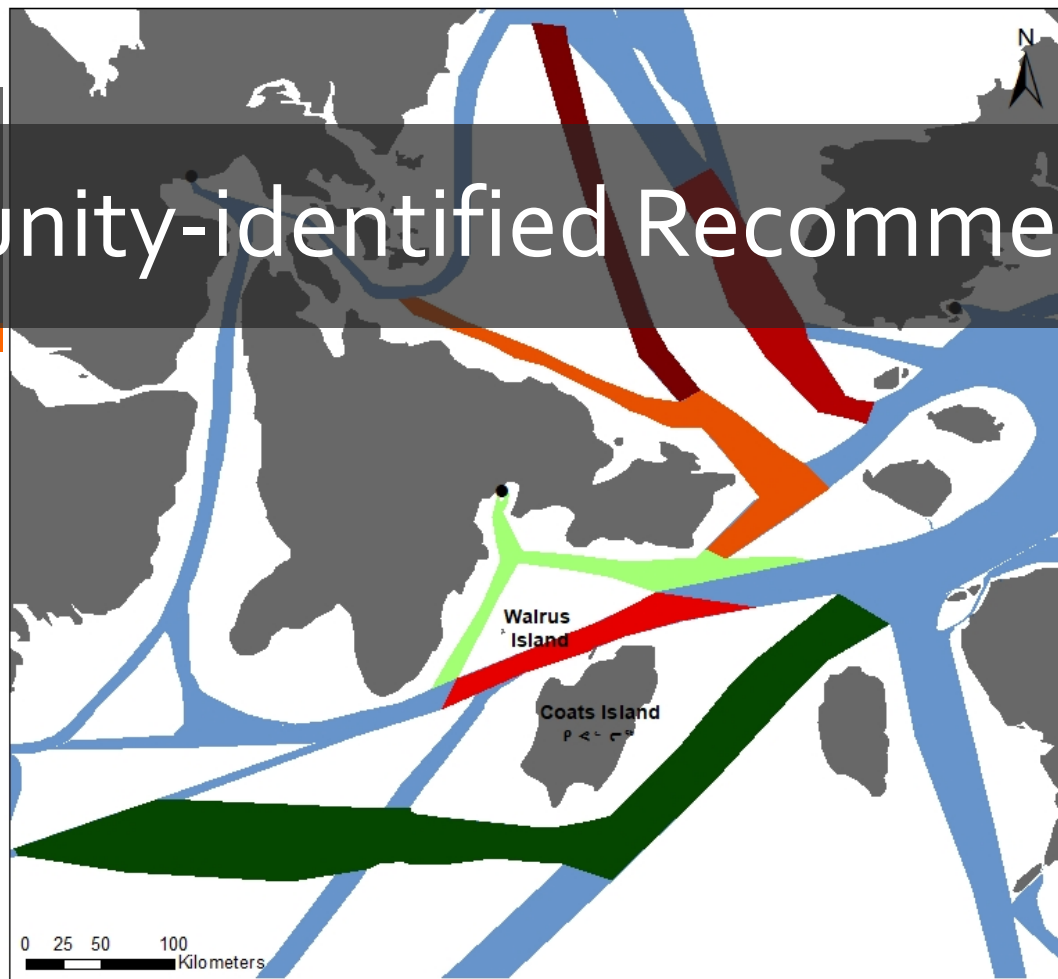
Legend

- Walrus Feeding
- Walrus Migration
- Walrus Migrate in October
- Past Walrus Migration



Map: Melissa Weber

Community-identified Recommendations



Legend

- Preferred Route for Community Resupply
- Preferred Route
- No Shipping due to Polar Bears
- No Shipping due to Beluga Migration
- No Shipping
- Move Corridor 50 miles from shore
- Low Impact Shipping Corridors



ARCTIC CORRIDORS

RESEARCH FOR POLICY ON SHIPPING GOVERNANCE IN ARCTIC CANADA

[INTERACTIVE MAPS](#)

www.arcticcorridors.ca

Indigenous Data Management

- Considerations
- Challenges
- Mitigating/protective measures



Our Considerations

- Calling Inuit knowledge “data”
- Share it for use in evidence-based, informed, decision-making
- Research ethics, National Inuit Strategy on Research, First Nations Principles of OCAP®
- Individual versus regional permissions to share
- Inability to regulate data usage once shared
- Who to share with – CHS, Inuit orgs, communities, NGOs



Our Challenges

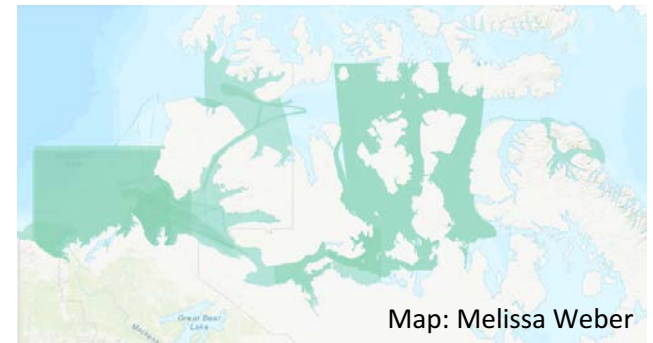
- Lack of centralized and/or local capacity to store, access, and control
- Our desire to share openly versus our fear of potential deleterious effects that may result (unintended use, misuse)
- Research ethics permissions versus the spirit in which the knowledge was shared, and NISR, and OCAP[®] principles



The screenshot shows the website for the Panel on Research Ethics (PRE). At the top, there is a header with the Government of Canada logo and the text "Government of Canada / Gouvernement du Canada" and "Canada". Below this is a purple banner with a red maple leaf and the text "Panel on Research Ethics" and "www.pre.ethics.gc.ca". A navigation bar contains links for "Français", "Home", "Contact Us", "Help", "Search", and "canada.gc.ca". The main content area shows a breadcrumb trail: "Home » TCPS 2 » 9. Research Involving the First Nations, Inuit and Métis Peoples Of Canada". The current page is titled "TCPS 2 - Chapter 9" and "Research Involving the First Nations, Inuit and Métis Peoples of Canada". A sidebar on the left lists "PRE" with sub-links for "Terms of Reference", "Members", and "Organizational Structure". The main content area lists "The Policy (TCPS)" with sub-links for "Introduction", "A. Key Concepts and Definitions", "B. Interpreting the Ethics Framework in Aboriginal Contexts", and "C. Applying Provisions of This Policy in Aboriginal Contexts".

Our Mitigating/Protective Measures

- Education – communities, Inuit organizations, other academics
- CUIERIP, OCAP[®], webinars, books, discussion group
- Memoranda of understanding, knowledge sharing agreements, ethics and acknowledgements factsheets
- Data aggregation, downloadable, detail
- Disclaimers and cautionary statements
- Providing context – links to reports



Our Mitigating/Protective Measures

Culturally Significant Marine Areas (CSMAs)

Through this research project, Inuit and Northerners in Arctic Communities identified and mapped Culturally Significant Marine Areas (CSMAs). These maps reflect knowledge gathered through participatory mapping, focus group discussions, and interviews with community members who were identified by local organizations as key knowledge holders. The CSMAs presented here reflect the opinions of community members who participated in this research project. Thus, additional CSMAs may exist which have not yet been documented.

For more details see our [community reports](#) and the corresponding [community-identified recommendations](#) for the Low Impact Shipping Corridors in these same areas.



And yet...

- Some of the knowledge that we documented has yet to be shared beyond select keepers and owners of that knowledge
- The direct result of our hesitation and indecision
- Learning from others, taking direction from knowledge holders and Inuit organizations
- Discussions like this today

Thank you
Merci
Qujannamiik
ncarte3@uottawa.ca
www.arcticcorridors.ca

